



**ILUMINA 502**  
DIGITAL PRODUCTION PRESS

**Quick Reference  
Manual**

**XANTÉ**

800.926.8839 / 251.473.6502  
xante.com

## Trademarks

Xanté® and Ilumina Digital Production Press® are registered trademarks of Xanté Corporation.

Adobe® and Adobe® PostScript® are registered trademarks of Adobe Systems Incorporated.

Windows® is a registered trademark of Microsoft Corporation.

Hammermill® is a registered trademark of International Paper Company.

All other brand and product names are trademarks, registered trademarks, or service marks of their respective holders. This manual is Copyrighted © 2009 by Xanté Corporation. All Rights Reserved. Printed in the USA. This manual may not be copied in whole or in part, nor transferred to any other media or language without the express written permission of Xanté Corporation.

Xanté Corporation reserves the right to make changes to this manual and to the equipment described herein without notice. Every effort has been made to ensure that this manual is free of inaccuracies and omissions.

However, Xanté Corporation makes no warranty of any kind including, but not limited to, any implied warranties of merchantability and fitness for a particular purpose with regard to this manual.

Xanté Corporation assumes no responsibility for, or liability for, errors contained in this manual or for incidental, special, or consequential damages arising out of the furnishing of this manual, or the use of this manual in operating the equipment, or in connection with the performance of the equipment when so operated.

---

**Xanté Corporation**  
2800 Dauphin Street  
Mobile, AL 36606-2400  
Phone: (800) 926-8393, (251) 473-4920  
Fax: (251) 473-6503  
[www.xante.com](http://www.xante.com)

**Xanté Europe**  
Marketing 1  
6921 RE Duiven  
The Netherlands  
Tel.: (EU)+31 (0) 26.319.3210  
Fax: (EU)+31 (0) 26.319.3211  
[www.xante.com](http://www.xante.com)

## SAFETY INFORMATION

- Always use the Ilumina Digital Production Press in a well ventilated area. Allow enough room around the Ilumina Digital Production Press for adequate ventilation and easy access to the paper trays. If you place the Ilumina Digital Production Press in an enclosure, ensure it is properly ventilated.
- Do not use the Ilumina Digital Production Press near water. Do not spill any type of liquid into it.
- Be certain that your power source matches the rating listed on the back of the Ilumina Digital Production Press. If you are unsure, contact your dealer or local power company.
- Do not insert anything into the ventilation slots on the Ilumina Digital Production Press. You could cause an electrical shock or electrical arcing, which could cause a fire.
- Aside from the routine maintenance described in the documentation, do not try to service the Ilumina Digital Production Press yourself. Removing the cover may expose you to shocks or other electrical hazards.

## Table of Contents

<b>Setup</b> .....	<b>6</b>
<b>ORDERING SUPPLIES</b> .....	<b>9</b>
How to Order .....	9
Order Numbers .....	9
Toner Cartridges, Type C7 .....	9
Image Drums, Type C7.....	10
Other Consumables .....	10
Changing Settings .....	11
<b>MENU STRUCTURE</b> .....	<b>11</b>
Configuration.....	11
Print Information .....	11
Print Secure Job (Optional) .....	11
Menus .....	12
Administrative Setup.....	12
Calibration .....	12
<b>SETTINGS</b> .....	<b>12</b>
Settings by Media Weight .....	12
Individual Print Jobs.....	12
All Print Jobs (Defaults).....	13
Reset to Factory Defaults .....	13
Settings by Paper Weight.....	14
US Bond .....	14
Index .....	14

Paper Tray Settings.....	15	To Delete the Document.....	19
Envelope Feeder Settings.....	15	<b>CONTROL PANEL .....</b>	<b>20</b>
Settings by Media Type.....	16	Ready Light.....	20
Paper.....	16	Attention Light.....	20
Envelopes.....	16	Power Save.....	20
Control Panel.....	16	To Disable Power Save.....	21
Fuser Temp - For most print jobs the fuser dial can be position midway as shown.....	16	Set the Time Interval.....	21
Conveyor Speed - Adjust the conveyor speed based on the media type and me- dia size.....	16	<b>CLEANING LED HEADS.....</b>	<b>22</b>
Up/Down - Moves the feeder up and down.....	16	How to Clean.....	22
<b>RECOMMENDED MEDIA.....</b>	<b>17</b>	<b>REPORTS.....</b>	<b>22</b>
Paper.....	17	Printing Reports.....	22
Sample Ream Label.....	17	<b>TROUBLESHOOTING .....</b>	<b>23</b>
Envelopes.....	18	Using the Help Button.....	23
Loading Paper.....	18	Paper Jams.....	23
Loading Letterhead.....	18	<b>ETHERNET INTERFACE FOR</b>	
<b>EXIT PATHS .....</b>	<b>18</b>	<b>TCP/IP .....</b>	<b>24</b>
Face Down.....	18	Install the Ferrite Core.....	24
Face Up.....	19	Assign an IP Address to the Ilumina Digital Production Press .....	25
<b>SECURE PRINT (Optional) .....</b>	<b>19</b>	<b>PARALLEL INTERFACE.....</b>	<b>26</b>
Storing Jobs to Hard Disk Drive .....	19	Connect the Parallel Cable .....	26
To Print the Document .....	19	<b>WINDOWS INSTALLATION.....</b>	<b>26</b>
		Select a Printer Driver in Windows....	26
		PostScript Printer Driver .....	26
		PCL Printer Driver .....	26

Installing Optional Components.....	27	Windows.....	38
TCP/IP Driver Install.....	27	Mac OS 9.....	38
LPR Utility to Discover.....	28	Mac OS X.....	39
USB Driver Install.....	28	<b>Installing Additional Utilities.....</b>	<b>38</b>
Enable the USB Port .....	30	Windows.....	39
Print a Test Page .....	30	Mac OS 9.....	39
Parallel (LPT1) Driver Install.....	30	Mac OS X.....	39
Print a Test Page .....	31	<b>PDF or On-Line Manuals.....</b>	<b>40</b>
<b>Macintosh Installation.....</b>	<b>32</b>	Requirements.....	40
PostScript Printer Driver .....	32	View the Manuals.....	40
Installing Additional Utilities .....	32	<b>Service and Support.....</b>	<b>40</b>
<b>Installation for Mac OS 9.....</b>	<b>32</b>		
Ethernet and USB Driver Install .....	32		
Ethernet Desktop Icon.....	33		
USB Desktop Icon.....	34		
<b>Installation for Mac OS X .....</b>	<b>35</b>		
Ethernet and USB Driver Install .....	35		
Adding the Ilumina Digital Production			
Press using Ethernet .....	36		
Adding the Ilumina Digital Production			
Press using USB .....	36		
<b>Optional Hardware.....</b>	<b>36</b>		
Windows.....	36		
Mac OS 9.....	37		
Mac OS X.....	37		
<b>Setting Default Software Options.</b>	<b>38</b>		



## SETUP

Your Ilumina Digital Production Press set up will take about 30 minutes once the parts are assembled.

1. Assemble the Ilumina Base, the Envelope Feeder Assembly, and the Conveyor Assembly as outlined in the Assembly Guides.
2. Remove top packing pieces from the Ilumina.

3. Open the protective plastic bag.



4. Confirm package contents:

- Ilumina Digital Production Press
- Light-shield bags
- Power Cord
- Toner Cartridges
- Ferrite Core
- CDs
- Paper Catcher
- Conveyor
- Multi Purpose Feeder



5. Select a location for your Illumina Digital Production Press.



6. Lift the Illumina Digital Production Press and place on the pre-assembled base. Always use at least two people to lift or move the Illumina Digital Production Press.

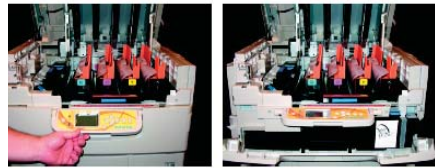
7. Align the envelope feeder to the Illumina Digital Production Press

8. Place the conveyor next to the Illumina's exit roller and connect the 9-pin cable to the 9-pin connector on the back of the printer.



9. Lift the top cover of the Illumina.

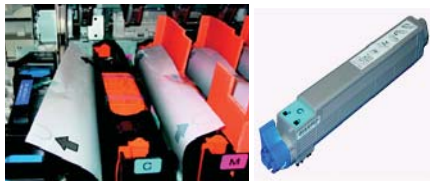
10. Lift operator panel, open front cover, and remove all of the shipping tape.



*Caution! Do not expose drums to direct sunlight  
Do not expose drums to light for more than 5  
minutes*



11. Remove colored image drum packing pieces. Remove tape. Remove protective sheet.



12. Shake toner cartridge from side to side to distribute toner. Remove locks and seals from the toner cartridge. Remove sealing tape from toner cartridge.



13. Lock toner cartridge with colored lever.

Install remaining toner cartridges and gently close the top cover.



14. Pull out the paper tray. Remove packing piece.



15. Set guides (a,b) to paper size. Load paper. Gently replace paper tray.

16. Insert the power cord.  
Do not connect this product to an uninterruptible power supply (UPS).

Be sure to use the 16Amp/AC power cord supplied with the printer. Use of a power cord NOT supplied with this printer, or an extension cord, may



result in overheating, and could be a safety hazard.

*Power cords are not supplied for 220 volt version. Check local regulations for correct power cords.*

## ORDERING SUPPLIES

### How to Order

- Consult the vendor where you purchased your Ilumina Digital Production Press
- Consult an Authorized Xanté Sales or Service Vendor
- Call Xanté Consumables direct at 1-800-540-7091 (US and Canada)
- Send Xanté an email from:  
**[www.xante.com/contact](http://www.xante.com/contact)**

Be sure to register your Ilumina Digital Production Press at:  
**[www.xante.com/register](http://www.xante.com/register)**.

### Order Numbers

Use only Type C7 Toner Cartridge and Image Drums.

### Toner Cartridges, Type C7



Color	Part #
Cyan .....	200-100222
Magenta .....	200-100223
Yellow.....	200-100224
Black.....	200-100225
4-Pack Assorted.....	200-100226

**Image Drums, Type C7**



Color	Part #
Cyan .....	200-100227
Magenta .....	200-100228
Yellow.....	200-100229
Black.....	200-100230
4 Pack Assorted .....	200-100231

**Other Consumables**



Consumable	Part #
Transfer Belt (1) .....	200-100232
Fuser (2)	
110v .....	200-100288
220v .....	200-100289
Toner Waste Bottle .....	200-100235

## Changing Settings



- Press [MENU]
- Use the ▾ key to scroll down to the function you wish to change
- Press [ENTER]
- Continue to use the ▾ and [ENTER] keys to locate the desired item
- Press [ENTER] and an asterisk will appear next to the chosen setting
- Press [ON LINE] to exit the Menu

## MENU STRUCTURE

### Configuration

- Page Count and Consumable Life
- Network Settings
- Multi-Purpose Tray Configuration
- System Settings

### Print Information

- Ilumina Digital Production Press & Network Configuration
- Lists:
  - HDD (hard disk drive) files, Fonts, etc.
- Error Log
- Engine Status

### Print Secure Job (Optional)

*Requires Password*

- Print out confidential documents downloaded to the HDD

## **Menus**

- Set the size, weight and type of media for the various feed trays
- Adjust system settings

## **Administrative Setup**

*Requires Admin Password*

The default password is "aaaaaa"

- Network Setup
- Print Setup
- PS and PCL Setup
- Color Setup
- Memory and Flash Memory Setup
- HDD and System Setup
- Change Administrative Password
- Reset/Save/Restore Settings

## **Calibration**

- Density Adjustment
- Registration
- Color Tuning

## **SETTINGS**

### **Settings by Media Weight**

The default media weight setting for The Multi-Purpose (MP) Tray is "plain paper". The default media weight setting for Tray 1 is "Auto".

### **Individual Print Jobs**

If you are using special media for only one print job, you can adjust the media settings in the driver.

Load the media in the appropriate tray (usually the Heavy Stock Feeder) and adjust the media settings as needed.

### All Print Jobs (Defaults)



- Press [MENU]
- Press ▽ key to "Menus" and press [ENTER]
- Highlight "Tray Configuration" and press [ENTER]
- Press ▽ key to select the tray to be configured and press [ENTER]
- Use the ▽ and [ENTER] to make your changes in the submenus
- Press [ON LINE] to exit the Menu

### Reset to Factory Defaults



- Press [MENU]
- Use the ▽ key to locate "Admin Setup" and press [ENTER]. "Enter Password" will appear on the screen
- Use the △ and ▽ keys to set the first digit in the password then press [ENTER]. Repeat the previous step until all six digits of the password are completed and press [ENTER]
- Use the ▽ key to locate "Settings" and press [ENTER]
- Highlight "Reset Settings" and press [ENTER]
- Press [ENTER] to execute. The Ilumina Digital Production Press will reset and return to the Ready-to-Print state

### Settings by Paper Weight

Select the appropriate settings in either the front panel or in the Ilumina Digital Production Press driver.

Any setting changed in the Ilumina Digital Production Press driver overrides the front panel settings.

To determine if a paper weight is US Bond or Index, check the metric equivalent.

Example:

35 lb. US Bond = 132 g/m<sup>2</sup>

35 lb. Index = 64 g/m<sup>2</sup>

For more information, go to [www.xante.com/paper](http://www.xante.com/paper)

### US Bond

Setting	US Bond (metric)
Auto (Default)	20 to 57 lb. (75 to 214 g/m <sup>2</sup> )
Light	20 lb. (75 g/m <sup>2</sup> )
Medium Light	20 to 21 lb. (75 to 90 g/m <sup>2</sup> )
Medium	22 to 24 lb. (90 to 105 g/m <sup>2</sup> )

### Index

Settings	Index (metric)
Auto (Default)	35 to 118.6 lb. (64 to 216 g/m <sup>2</sup> )
Light	35 lb. (64 g/m <sup>2</sup> )
Medium Light	37 to 40 lb. (67 to 72 g/m <sup>2</sup> )
Medium	42 to 50 lb. (76 to 90 g/m <sup>2</sup> )

<b>Paper Tray Settings</b>		<b>Envelope Feeder Settings</b>	
Media Weight (US Bond)	75 to 216 g/m <sup>2</sup> <i>Duplexing:</i> 75 to 188 g/m <sup>2</sup> *	Media Weight (US Bond)	75 to 216 g/m <sup>2</sup> <i>Duplexing:</i> 75 to 188 g/m <sup>2</sup> *
Media Size	<i>Paper:</i> <ul style="list-style-type: none"> <li>• Min. 4.1" x 5.8" (105 x 148 mm)</li> <li>• Max. 12.9" x 18" (305 x 457 mm)</li> <li>• <i>Custom sizes must be defined in driver before printing.</i></li> </ul>	Media Size	<i>Paper:</i> <ul style="list-style-type: none"> <li>• Min. 4.375" x 4.13" (130 x 105 mm)</li> <li>• Max. 13" x 15" (330 x 381 mm)</li> <li>• <i>Custom sizes must be defined in driver before printing.</i></li> </ul>
Capacity	530 Sheets 75 g/m <sup>2</sup> paper	Capacity	800 envelopes**

\* Duplex printing is restricted to paper only between 75 - 188 g/m<sup>2</sup>

\* Duplex printing is restricted to paper only between 75 - 188 g/m<sup>2</sup>


\*\* Envelope size is 9.5" x 4.25" (241 x 108 mm)

<b>Settings by Media Type</b>			
<b>Paper</b>			
Size	Feed Tray // Exit Tray		
Letter, Legal-13/13.5/14, Executive, Tabloid, Tabloid Extra, A3, A3 Wide, A3 Nobi, A4, A5, B4, B5	All Trays Face-Down up to 176 g/m <sup>2</sup> Face-Up up to 216 g/m <sup>2</sup>		
A6	Paper Tray Face-Up only		
Custom: Min. 4.1" x 5.8", Max. 12.9" x 18"	Paper Tray Face-Up only		
<b>Envelopes</b>			
Media	Size	Type	Feed Tray // Exit Tray
Env.	Custom	N.A.	Envelope Feeder Face-Up

**Control Panel**

The Ilumina Digital Production Presses control panel provides a variable fuser temperature, conveyor speed, and feeder up/down control.

- Fuser Temp - For most print jobs the fuser dial can be position midway as shown
- Conveyor Speed - Adjust the conveyor speed based on the media type and media size.
- Up/Down - Moves the feeder up and down.





## RECOMMENDED MEDIA

Media Type	Recommended
Paper	<p><b>Letter:</b>                      Hammermill Laser Print                      Radiant White, 90.3 g/m<sup>2</sup>                      Xerox 4024, 75.2 g/m<sup>2</sup></p> <p><b>Tabloid/Tabloid</b>  <b>Extra:</b> Hammermill                      Laser Print                      Radiant White, 90.3 g/m<sup>2</sup></p>

### Paper

#### Do Not Use

- Heavily Coated Paper
- Embossed or Textured Paper
- Paper with Cutouts, Perforations, or Excessive Paper Dust

Xanté highly recommends that all printing be accomplished on pre-converted papers.

Converted sheet types Xanté is concerned with include, but are not limited to: scored, perforated, embossed,

debossed, ragged edge, textured, and foil papers. These converted types of paper media can cause difficulties for the Illumina Digital Production Press. Although printing on converted papers is possible, doing so can limit the printer's performance.

Optimal ratings as quoted on the Illumina Digital Production Press spec sheet will be impacted anytime the user deviates from printing with the standard pre-converted media.

### Sample Ream Label

1	2	3	4

1. Media Size, US / Metric
2. Media Weight, US Bond / Metric
3. Number of Sheets in Package
4. Manufacturer Name for Media

## Envelopes

Feed side flap envelopes with the flap side down and flap in first. Feed end flap envelopes with the flap down and flap toward the back of the Ilumina Digital Production Press.

*For the best print results, use only the recommended envelopes.  
Never use envelopes with metal clasps or snaps.*

## Loading Paper

Pull the cassette tray out. Adjust the side guides and back stop to the correct media size. Load the paper print side down and slide the cassette tray in.

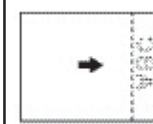


## Loading Letterhead

*Long edge feed—*  
face down, top  
toward the back of  
the Ilumina Digital  
Production Press.



*Short edge feed—*  
face down, top  
to the right.



Load letterhead stationery with the printed side down.

## EXIT PATHS

### Face Down

This tray is located on top of the Ilumina Digital Production Press and can hold up to 500 sheets of 75 g/m<sup>2</sup> paper.



### **Face Up**

The Conveyor is located on the opposite side of the Envelope Feeder and **MUST** be used for special media such as heavy papers. The face up exit path provides a straight-through paper feed path when printing envelopes, labels, etc.



### **SECURE PRINT (Optional)**

#### **Storing Jobs to Hard Disk Drive**

The document must first be assigned a password and then processed to print which allows it to be saved to the HDD.

### **To Print the Document**

You must go to the front panel and enter the password.

- Press [MENU]
- Select [Print Secure Job]
- Use the  $\Delta$  and  $\nabla$  keys to enter the first digit of your password and press [ENTER] to move to the next digit. Repeat the process and press [ENTER] again when complete
- Select [Print] and press [ENTER]
- Choose the [Set Collating Amount] and press [ENTER]

*Secure Print:* The document prints and it is deleted from the hard disk drive

*Store to HDD:* The document prints and it remains stored until deleted

### **To Delete the Document**

- Press [MENU]
- Select [Print Secure Job]

- Use the  $\triangle$  and  $\nabla$  keys to enter the first digit of your password and press [ENTER] to move to the next digit. Repeat the process and press [ENTER] again when complete
- Select [Print] and press [ENTER]
- Select [Delete] and press [ENTER]
- Select [Yes] to confirm
- Press [ENTER] again to exit the Menu

## CONTROL PANEL



### Ready Light

ON  
The Ilumina Digital Production Press

is ready to process a job

OFF  
The Ilumina Digital Production Press is off or needs attention

FLASHING  
The Ilumina Digital Production Press is receiving data

### Attention Light

ON  
The Ilumina Digital Production Press needs attention, but will continue to operate. An error message will display (i.e., "TONER LOW")

OFF  
Normal

FLASHING  
The Ilumina Digital Production Press needs attention immediately. An error message will display (i.e., PAPER JAM)

**Power Save**  
Power Save determines how long the

Illumina Digital Production Press waits before going into standby mode (default is 60 minutes). This saves energy, however it requires time to warm up when it receives a new print job.

#### **To Disable Power Save**

Change the default settings on the front panel of the Illumina Digital Production Press:

- Turn the Illumina Digital Production Press ON while holding [ENTER] and wait until it displays the Boot Menu setup
- Select [Power Setup]
- Select [Power Save]
- Select [Disable]
- Press [ON LINE] to exit the Menu

#### **Set the Time Interval**

- Press [MENU]
- Select [Menus]
- Select [System Adjust]

- Select [Power Save Time]
- Press ▽ key to select the time interval
- Press [ON LINE] to exit the Menu

## CLEANING LED HEADS

It is recommended to clean the LED heads under the following conditions:

- When you install a new toner cartridge
- When the printed sheets show faded images, white stripes, or blurred letters
- When toner scatter is visible
- When paper jams occur on the transfer belt under the LED heads

### How to Clean

- Lift the top cover halfway up. This allows you access to the LED heads, bypassing the guards.



- Use the lens cleaner supplied with the toner cartridge (or a clean, soft, lint-free cloth) to gently wipe the LED heads. Close the lid when finished.



## REPORTS

### Printing Reports



- Press [MENU]
- Select [Print Information]
- Press ▽ key to select a report:

[Configuration]

General information on your Ilumina Digital Production Press configuration, plus a listing of the current menu settings

[Network]

A single-page detailed list of network information

[File List]

Creates a list of files stored on the hard disk drive

[PCL Font List]

Prints a list of common PCL fonts

[IBM PPR Font List]

Produces a list of IBM ProPrinter emulation fonts in the Ilumina Digital Production Press

[Epson FX Font List]

Creates a list of Epson FX emulation fonts stored in the Ilumina Digital Production Press

- Press [ENTER] to make your selection. The report will print automatically and the Ilumina Digital Production Press will return to the Ready-to-Print state.

## TROUBLESHOOTING

### Using the Help Button

When an error message appears on the control panel, press [HELP] to display information to correct the error.

Use the ▾ key to move down through the Help information.

### Paper Jams

If you are experiencing frequent paper jams, check the following items.

- Is the Ilumina Digital Production Press on a level surface?
- Is your media within specifications listed earlier in this document? Media

that are too light or too heavy will often cause jams.

- Are the tray and media settings in the front panel and driver appropriate for the media being used?
- Do not use creased or curled media.
- Is static causing the media to stick together? Remove the paper in the tray, fan and realign the stack in the tray.
- The feed rollers may need cleaning.
- If envelopes are jamming, make sure the stack is properly aligned and that they are loaded properly.
- Rotate the envelopes 180° in the feeder.
- Loosen the center piece on the guide rail and rotate up to eliminate down pressure on the media.
- Check feeder alignment. Verify that

the feeder is centered with the printer input roller.

## **ETHERNET INTERFACE FOR TCP/IP**

### **Install the Ferrite Core**

In order to reduce electromagnetic interference — "noise" that interferes with TVs or other appliances — you must place the enclosed ferrite core on the network cable connected to your printer.

To Install the Ferrite Core:

1. Disconnect the network cable from the Ilumina Digital Production Press, if necessary.
2. Loop the cable to keep the ferrite core in place.





3. Place the open core about 1 inch from the cable connector on the Ilumina Digital Production Press end.
4. Press the two halves of the core together until they click shut.
5. Connect the Ethernet cable between the Ilumina Digital Production Press and the Ethernet hub.
6. Turn the Ilumina Digital Production Press ON.
7. Use the front panel to assign the IP Address.

**Assign an IP Address to the Ilumina Digital Production Press**

If you are not using DHCP, you need to obtain an IP Address from your network Administrator and enter it using the front panel:



1. Confirm that the Ilumina Digital Production Press displays [Ready To Print].
2. Press ▽ until [Admin Setup] displays. Press ENTER.
3. Enter the password. Press either △ or ▽ to enter the first figure of the password. Press ENTER to proceed to the next figure. *The default password is aaaaaa. Hold down the key more than two seconds to fast forward.*
4. Press ENTER again after completing the password.
5. Press △ until [Network Setup] displays. Press ENTER.

6. Press  $\nabla$  until [IP Address] displays. Press ENTER.
7. Press either  $\triangle$  or  $\nabla$  to set the first figure of the IP address. Press ENTER to proceed to the next section of numbers.
8. Repeat steps 8 and 9 to set all digits.
9. Press  $\triangleleft$  and repeat steps 7 through 10 to set the [Subnet Mask] and [Gateway Address].
10. Press ONLINE until [Ready To Print] displays.

## PARALLEL INTERFACE

### Connect the Parallel Cable

Requirements:

- PC running Windows 98 or above.

- Bidirectional (IEEE 1284 compliant) parallel cable. The cable must be shielded and UL and CSA approved.
1. Make sure the Ilumina Digital Production Press is powered OFF.
  2. Connect a parallel cable between the Ilumina Digital Production Press and computer.

## WINDOWS INSTALLATION

### Select a Printer Driver in Windows

Select a driver appropriate for your application.

### PostScript Printer Driver

If you use PostScript fonts, or you will be printing PostScript graphics, choose this driver. Performance is faster and graphics print at their best quality.

### PCL Printer Driver

If you use TrueType fonts and you do not print PostScript (including “.eps” files) graphics, choose this driver. This is more efficient and gives good results.

You can install both drivers and use either one depending on your application. However, each driver must be installed individually.

### **Installing Optional Components**

If your Ilumina Digital Production Press has optional components (i.e., Duplexer, HDD, RAM), they must be activated before they can be used.

### **TCP/IP Driver Install**

1. Make sure the Ethernet cable is connected and your Ilumina Digital Production Press is turned ON.
2. Insert CD1 into your CD-ROM drive. The CD will autorun.  
If it does not autorun, click [Start] → [Run] → [Browse]. Browse to your CD-ROM drive. Double-click [Install.exe].
3. The License Agreement will appear. Click [Next] to accept.
4. Select your language if needed.
5. Select [Custom Install] to install the printer driver and software utilities. To install only the Ilumina Digital Production Press driver, select [Minimal Install] and skip to Step 7.
6. Select [Printer Driver Installer].
7. Select [Network Printer]. Click [Next].
8. Select [Directly to the Network] using [TCP/IP]. Click [Next].
9. The TCP/IP Connection screen will appear. Select [Search Address]. Click [Next].
10. Highlight your Ilumina Digital Production Press. Click [Next].
11. Select the [PS] or [PCL] driver under Printer Emulation. Click [Next].
12. Follow the on-screen instructions to complete the installation.

### **LPR Utility to Discover**

The LPR Utility is installed automatically with the network Ilumina Digital Production Press drivers.

In order to send documents to the Ilumina Digital Production Press, the LPR utility must be installed. LPR installs automatically when the drivers are installed using the Menu Installer as instructed here. If drivers are installed using Windows "Add Printer Wizard," you must manually load the LPR Utility from the Menu Installer on CD1. To do this, click [Custom Install] → [Network Software] → [Installation/Config] → [LPR Utility].

To discover the Ilumina Digital Production Press, do the following:

1. Click [Start] → [Programs] → [Xanté] → [Xanté LPR Utility].
2. Click [Remote Print]. Then, click [Add Printer].

3. Select your Ilumina Digital Production Press from the drop-down list
4. Enter the IP Address manually or click [Discover] and wait for the Ilumina Digital Production Press to be discovered.
5. Click [OK].

### **USB Driver Install**

The installation procedure may vary slightly depending on the operating system you are using. Drivers are provided for Windows XP/2000/Me/98.

1. Make sure the USB cable is connected and your Ilumina Digital Production Press is turned OFF.
2. Insert CD1 into your CD-ROM drive. The CD will autorun.

<p>If it does not autorun, click [Start] → [Run] → [Browse]. Browse to your CD-ROM drive. Double-click [Install.exe].</p> <ol style="list-style-type: none"> <li>3. The License Agreement will appear. Click [Next] to accept.</li> <li>4. Select your language if needed.</li> <li>5. Select [Custom Install] to install the printer driver and software utilities. To install only the Ilumina Digital Production Press driver, select [Minimal Install] and skip the next step.</li> <li>6. Select [Printer Driver Installer].</li> <li>7. Select [Local Printer]. Click [Next].</li> <li>8. Select [USB]. Click [Next].</li> <li>9. Select the [PS] or [PCL] driver under Printer Emulation. Click [Next].</li> <li>10. If prompted, type a name for your Ilumina Digital Production Press. Click [Next].</li> </ol>	<ol style="list-style-type: none"> <li>11. If prompted, select “Do not share this printer.” Click [Next].</li> <li>12. Drivers will begin to copy. If a connect cable message appears, follow the on-screen instructions.</li> <li>13. Switch the Ilumina Digital Production Press ON.  If the “New Hardware Found” Wizard displays: On Win 98: Select “Search for the best driver for your device” Click [Next]. Select your CD-ROM drive then click [Next]. On Win XP and Win Me: Select “Install the software Automatically” or “Automatic Search...” and click [Next].</li> <li>14. Click [Finish] to complete the installation.</li> </ol>
--	---

### **Enable the USB Port**

1. Click [Start] → [Settings] → [Printers].
2. Right click the Ilumina Digital Production Press icon and go to [Properties].
3. Click the [Ports] or [Details] tab according to your version of Windows.
4. Select the [USB001] or [OP1USB1] port under “Print to the following port.”

### **Print a Test Page**

1. Click [Start] → [Settings] → [Printers].
2. Right click the Ilumina Digital Production Press icon and go to [Properties].
3. Click the [General Tab] and click the [Print Test Page] button.
4. Click [OK] to close the Properties window.

### **Parallel (LPT1) Driver Install**

The installation procedure may vary slightly depending on the operating system you are using. Drivers are provided for Windows XP/2000/Me/98.

1. Make sure the parallel cable is connected and that your Ilumina Digital Production Press is turned OFF.
2. Insert CD1 into your CD-ROM drive. The CD will autorun.  
If it does not autorun, click [Start] → [Run] → [Browse]. Browse to your CD-ROM drive. Double-click [Install.exe].
3. The License Agreement will appear. Click [Next] to accept.
4. Select your language if needed.

5. Select [Custom Install] to install the printer driver and software utilities. To install only the Ilumina Digital Production Press driver, select [Minimal Install] and skip the next step.
6. Select [Printer Driver Installer].
7. Select [Local Printer]. Click [Next].
8. Select [LPT1]. Click [Next].
9. Select the [PS] or [PCL] driver under Printer Emulation. Click [Next].
10. If prompted, type a name for your Ilumina Digital Production Press. Click [Next].
11. If prompted, select "Do not share this printer." Click [Next].
12. Follow the on-screen instructions to complete the installation. Click [Finish].

13. Switch the Ilumina Digital Production Press ON.

#### **Print a Test Page**

1. Click [Start] → [Settings] → [Printers].
2. Right click the Ilumina Digital Production Press icon and go to [Properties].
3. Click the [General Tab] and click the [Print Test Page] button.
4. Click [OK] to close the Properties window.

## **MACINTOSH INSTALLATION**

### **PostScript Printer Driver**

If you use PostScript fonts, or you will be printing PostScript graphics, choose this driver. Performance is faster and graphics print at their best quality.

The PCL Driver is not available for Mac OS.

### **Installing Additional Utilities**

In the CD1 Menu Installer you can install additional Network and Productivity Software.

Not all utilities are available for all versions of Mac OS. See the OS versions listed on the [Custom Install] screen.

To install additional utilities, select [Custom Install]. Click the box next to each utility that you want to install and click [Install].

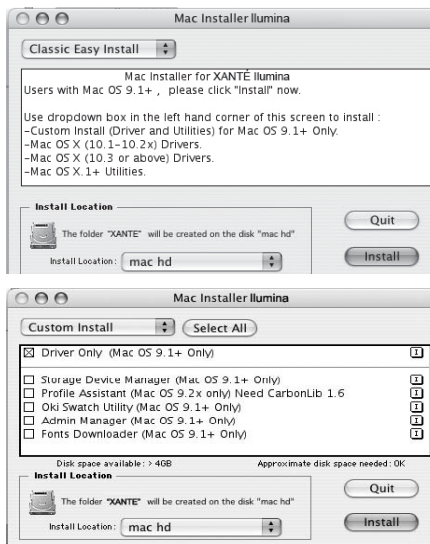
## **Installation for Mac OS 9**

### **Ethernet and USB Driver Install**

1. Make sure the Ethernet cable is connected and your Ilumina Digital Production Press is turned ON.
2. Insert CD1 into your CD-ROM drive.
3. Double-click the Xanté CD icon that appears on the desktop.
4. Double-click the folders for [Mac] → [Driver Installers].
5. Double-click your language folder.
6. Double-click the [Mac Installer Ilumina Digital Production Press] icon. Click [Continue].
7. Click [Accept] to accept the License Agreement.



- To select the Ilumina Digital Production Press driver plus additional utilities, click [Install].  
To install only the Ilumina Digital Production Press driver, click [Custom Install].

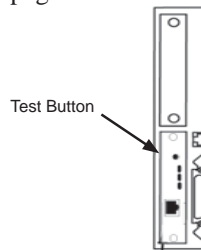


- When the installation is complete, click [Quit].
- Continue to the “Creating the Desktop Icon” for Ethernet or USB.

### Ethernet Desktop Icon

- Select [Chooser] from the Apple drop-down menu.
- Highlight the AdobePS icon and your Ilumina Digital Production Press on the right. Click [Create].
- Wait until your system finishes the Ilumina Digital Production Press setup and the desktop icon appears on your desktop.

4. Close the [Chooser] window. If you need to verify the Ilumina Digital Production Press name, press the print server test button to print the Configuration pages. The Ilumina Digital Production Press name is on the second page.



### USB Desktop Icon

1. Locate and double-click the [Desktop Printer Utility] on your hard drive. Normally located on the hard drive under [Applications] → [Utilities] → [AdobePS Components].

2. In the drop-down box, select [AdobePS].
3. Highlight [Printer (USB)] under “Create Desktop.” Click [OK].
4. Under “Postscript Printer Description (PPD)” click [Change].
5. Highlight your Xanté Ilumina Digital Production Press. Click [OK].
6. Under “USB Printer Selection” click [Change].
7. Highlight your Xanté Ilumina Digital Production Press. Click [OK].
8. Click [Create] and the Ilumina Digital Production Press icon will appear on the desktop. Close [Chooser].
9. Print a test page from TextEdit or your chosen application.

## Installation for Mac OS X

### Ethernet and USB Driver Install

1. Make sure the Ethernet cable is connected and your Ilumina Digital Production Press is turned ON.
2. Insert CD1 into your CD-ROM drive.
3. Double-click the Xanté CD icon that appears on the desktop.
4. Double-click the folders for [Mac] → [Driver Installers].
5. Double-click your language folder.
6. Double-click the [Mac Installer Ilumina Digital Production Press] icon. Click [Continue]. You must be an Admin user to install drivers.
7. Click [Accept] to accept the License Agreement.

8. Click on the drop-down menu. Select the MAC OS X you are using.



9. Click [Install].
10. Click [Continue] to install additional utilities or click [Quit].
11. Continue to the “Adding the Ilumina Digital Production Press” for Ethernet or USB.

### **Adding the Ilumina Digital Production Press using Ethernet**

1. Open [Printer Setup Utility] or [Print Center]. Click [Add Printer].  
Normally located under [Applications] → [Utilities].
2. Select [IP Printing] or [Line Printer Daemon] from the drop down menu.
3. Enter the IP Address for your Ilumina Digital Production Press.
4. Enter “Ilumina Digital Production Press” for the queue name.
5. Verify that “Print Using” displays [Xanté Ilumina Digital Production Press(PS)]. Click [Add].
6. Print a test page from TextEdit or your chosen application.

### **Adding the Ilumina Digital**

### **Production Press using USB**

1. Open [Printer Setup Utility] or [Print Center]. Click [Add Printer].  
Normally located under [Applications] → [Utilities].
2. Select [USB] from the drop down menu.
3. Follow the on-screen instructions to complete the installation.
4. Print a test page from TextEdit or your chosen application.

### **Optional Hardware**

If your Ilumina Digital Production Press has optional components (i.e., Duplexer or RAM), they must be activated before they can be used.

Installable options configuration is only available on OS X 10.2 and above.

### **Windows**

1. Click [Start] → [Settings] → [Printers].

2. Right click the Ilumina Digital Production Press icon and go to [Properties].

3. **Windows 2000 / XP / NT**  
Click the [Device Settings Tab] and scroll down to [Installable Options].

**Windows Me / 98**

Click the [Device Options Tab] and go to [Installable Options] section.

4. Highlight and select installed options from the drop down menu.
5. Click [OK] to close the Properties window.
6. Options will now be available from within your applications.

**Mac OS 9**

1. Select [Chooser] from the Apple drop-down menu.

2. Highlight the AdobePS icon and your Ilumina Digital Production Press. Click [Setup].

3. Select [Configure] and select installed options from the drop down menu.

4. Close [Chooser] and options will be available from within your applications.

**Mac OS X**

1. Open [Printer Setup Utility].

2. Highlight the Ilumina Digital Production Press and click [Show Info].

3. Click on [Name & Location] and select [Installable Options].

4. Highlight and select installed options from the drop down menu.

5. Click [Apply Changes] and close the [Printer Setup Utility].

- Options will now be available from within your applications.

### **Setting Default Software Options**

This section details how to access the software options from each operating system.

For specific information on the individual software options see the Printing Guide.

#### **Windows**

- Click [Start] → [Settings] → [Printers].
- Right click the Ilumina Digital Production Press icon and go to [Properties].

- Windows 2000 / XP / NT**

Click the [General Tab] and click the [Printing Preferences] button.

Choose your default settings on the [Layout], [Paper/Quality], [Job Option], and [Color] Tabs and [Advanced] buttons.

#### **Windows Me / 98**

Click the [Device Options Tab] and go to [Printer Features] section.

Highlight and select installed options from the drop down menu.

- Click [OK] to close the Properties window. The settings can be changed on a per-job basis from [Properties] in the application print window.

#### **Mac OS 9**

- From your application, click [File] → [Print].
- Select [General] and scroll down the list of available options.
- Click [Save Settings] to set the default options.

### Mac OS X

1. From your application, click [File] → [Print].
2. Select [General] and scroll down the list of available options.
3. Click “Presets” and scroll to [Save As] to save the default options.

### Installing Additional Utilities

In the CD1 Menu Installer you can install additional Network and Productivity Software. For more information on these utilities see the Utilities Guide.

### Windows

To install Network Utilities, select [Custom Install] → [Network Software]. Select

[Administration Tools] to install network management tools or [Installation/Config] to install utilities for network printing, installation and configuration.

To install Productivity Software, select [Custom Install] → [Productivity Software] to install color and storage device management software.

### Mac OS 9

To install additional utilities, select the [Xanté CD icon] → [Mac] → [Driver Installers] → [Language Folder] → [Mac Installer Ilumina Digital Production Press] icon. To install all options, click [Install] or select [Custom Install] and click the boxes next to each utility that you want to install and then click [Install].

### Mac OS X

To install additional utilities, select the [Xanté CD icon] → [Mac] → [Driver Installers] → [Language Folder] → [Mac Installer Ilumina Digital Production Press] icon. Select [Custom Install] and click the boxes next to each utility that you want to install and click [Install].

Not all utilities are available for all versions of Mac OS. See the OS versions listed on the [Custom Install] screen. You must be an Admin user to install additional utilities.

### **PDF or On-Line Manuals**

For additional information on using Ilumina Digital Production Press features as well as Ilumina Digital Production Press utilities, see the reference manual located on CD2 or on [www.xante.com](http://www.xante.com).

### **Requirements**

Microsoft Internet Explorer version 4.0 or higher and Acrobat Reader.

### **View the Manuals**

To open the PDF manuals, you must have Acrobat Reader installed.

1. Insert CD2 into your CD-ROM drive. The CD will autorun.

If it does not autorun, click [Start] → [Run] → [Browse].

Browse to your CD-ROM drive. Double-click [XInstall.exe].

2. Click on the appropriate button to view the PDF manual. Click [Exit] to quit.

### **Service and Support**

If you need further assistance please visit our web site: [www.xante.com](http://www.xante.com)

In the U.S. and Canada, call:

(800) 926-8393

In Europe, call:

+31 (0) 26.319.3210

7 a.m. - 6 p.m. CST; Monday - Friday

Fax: (251) 473-6503

Other areas, contact your authorized Ilumina Digital Production Press vendor.

The logo for XANTÉ, featuring the word "XANTÉ" in a bold, blue, sans-serif font. The letter "É" has a small accent mark above it.